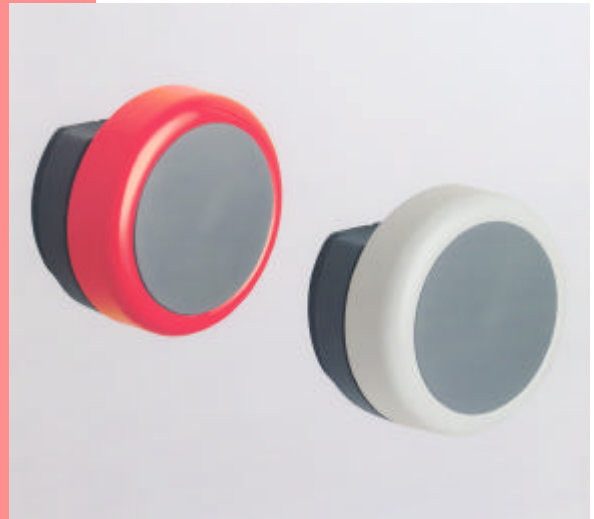


SOUNDER



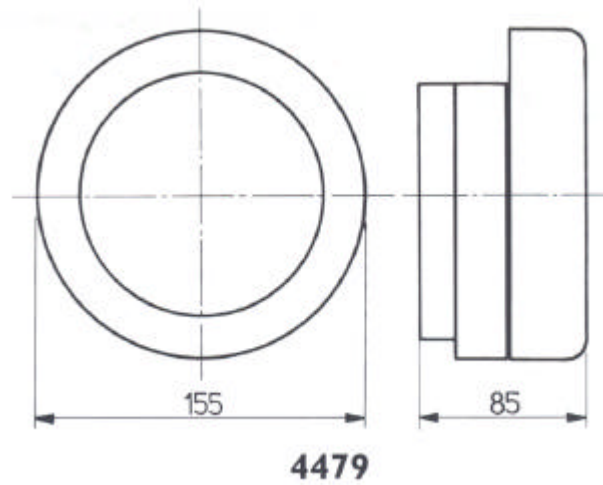
A unique, patented alarm bell designed for use in fire, security, industrial and other signalling systems. Weather resistant IP55.

The quality of sound output, and reduced current consumption, provide excellent sound coverage at minimum current and is made possible by combining a miniature solenoid with an integrated electronic control circuit. 12 Vdc, 24 Vdc and 230 Vac model are available. A four way terminal block is provided for looping in and out.

Easy installation with components that simply clip together. No back box required for surface wiring.

The range includes the following bells:
4479-12, 4479-24, 4479 RED 220,
4479 GY 12, 4479 GY 24, 4479 GREY 220.

DIMENSIONS



	4479-12 4479 GY 12	4479-24 4479 GY 24	4479 RED 220 4479 GREY 220
Power Supply	9-15 Vdc	18-30 Vdc	200-250 Vac
Current Consumption	60 mA	30 mA	25 mA
Sound Pressure	93 / 95 dB @ 1 meter		
Mechanism	Solenoid with electronic control		
Gong	Steel twist-lock		Steel twist-lock with security screw
Colours	Red - Grey		
Base plate	Moulded black polycarbonate		
Terminals	Suitable for flush and surface mounting		
Connections	Two in - Two out		
Working Temperature	-10° to +55° C		
Package	1 pcs.		
Weight	1100 gr		